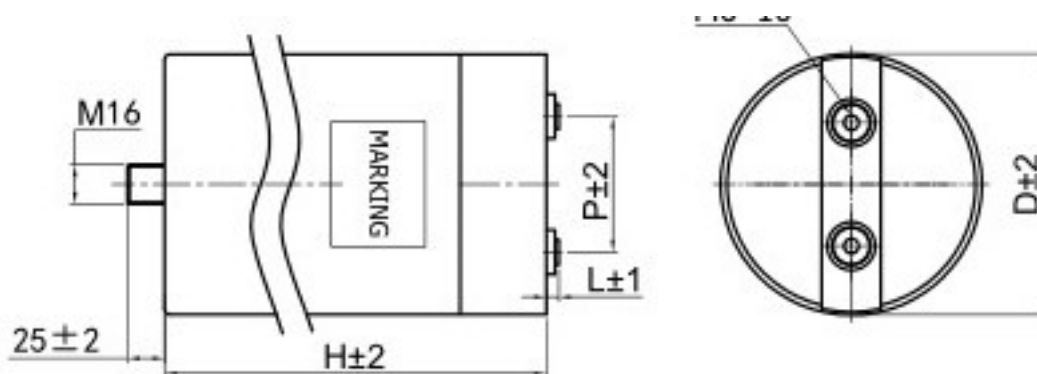


Technical parameters:

- 1, the rated voltage: 1100 VDC
- 2, rated capacity: 2900 μ F (+ 25 °C)
- 3, capacity deviation: K (plus or minus 10%, 100 hz, + 25 °C)
- 4, loss tangent value (DF) : 0.0030 (100 hz, + 25 °C) or less
- 5, electrode pressure (U_t) : 1.5 U_{rms} (1650 VDC / 10 s) without permanent breakdown or flashover
- 6, a casing pressure ($U_t - c$) : 3200 vac / 2 s no permanent breakdown or flashover
- 7, the rated temperature: MAX TEMP. + 85 °C (ambient temperature is not more than + 60 °C)
- 8, electrode insulation resistance (IR) : RC acuity 30000 s (100 VDC, the 60 s, + 25 °C)
- 9, the increased rate of resistance to voltage (DV/DT) : 5 v/uS (+ 25 °C)
- 10, the peak current: Max. 14500 A (+ 25 °C)
- 11, rated current: Max. 120 A (+ 25 °C)
- 12, aluminum shell (with plastic cover), install screw M16 * 25, black filling material
- 13, terminal: 2 - M6 * 10 copper nut extract
- 14, dielectric materials: metallized polypropylene



1	1100VDC	2900 μ F	136	345	5	50
编号	电压	容量	D	H	L	P
	规格		外形尺寸			间距